



Clip Clamp

The design of the locking mechanism of the Clip Clamp allows for great precision when mounting.

This mechanism, together with the folds in the material confers a spring function to this clamp, meaning that it can maintain constant pressure around the hose.

The rounded band edges avoid damage to the hose.

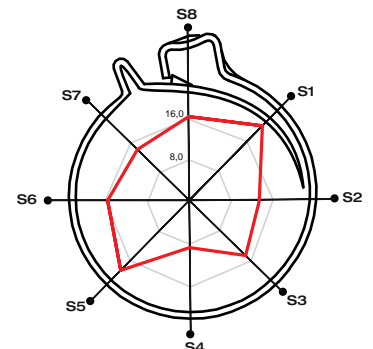
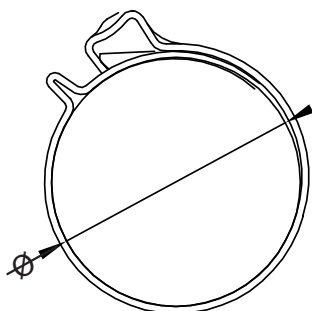
This clamp is especially suited for use in assembly lines and industrial applications due to the ease with which it can be mounted and the AISI-304 material employed in its manufacture.

W4

Clip Clamp W4

Article	Application Ø		Part n° W4	Colour	Bandwidth a	Box Quantity (MOQ)	Packing
	mm. min. - max.	inches min. - max.					
clip 8	8,5-9,5	21/64-3/8	03030410	YELLOW	7	500	8000
clip 9	9,5-10,5	3/8-13/32	03030429	PURPLE	7	500	8000
clip 10	10,5-11,5	13/32-29/64	03030437	NEUTRAL	7	500	4000
clip 11	11,5-12,5	29/64-31/64	03030445	GREEN	7	500	4000
clip 12	12,5-14,0	12,5-35/64	03030453	BLACK	8	500	4000
clip 13	13,5-15,0	1-7/32-19/32	03030461	YELLOW	8	500	2000
clip 14	14,5-16,0	37/64-5/8	03030470	PURPLE	8	250	2000
clip 15	15,5-17,0	39/64-43/64	03030488	NEUTRAL	8	250	2000
clip 16	16,5-18,0	21/32-45/64	03030496	GREEN	8	250	2000
clip 17	17,5-19,0	11/16-3/4	03030509	BLACK	8	250	2000
clip 18	18,5-20,0	47/64-25/32	03030517	YELLOW	8	250	2000
clip 19	19,5-21,0	49/64-53/64	03030525	PURPLE	8	250	2000
clip 20	20,5-22,0	13/16-55/64	03030533	NEUTRAL	8	250	2000
clip 21	21,5-23,0	27/32-29/32	03030541	GREEN	8	250	2000
clip 22	22,5-24,0	57/64-15/16	03030550	BLACK	8	250	2000
clip 23	23,5-25,0	59/64-63/64	03030568	YELLOW	8	250	2000
clip 24	24,5-26,0	31/32-1-1/32	03030576	PURPLE	8	250	2000

W4 Band: Stainless Spring Steel (AISI-304) (A2)



Polar Diagram								
● Sectors	S1	S2	S3	S4	S5	S6	S7	S8
— Force	19,7	13,4	14,5	9,6	17,6	15,3	14,2	16,2

Torque / Efficiency [Nm / daN]